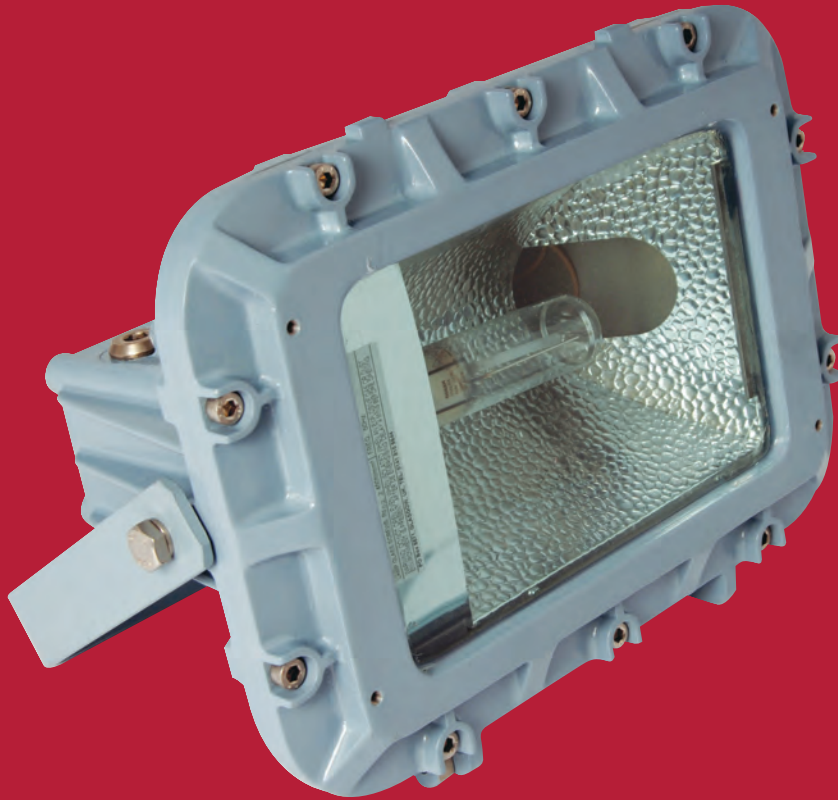


FLOODLIGHT VL65



FEATURES AND BENEFITS

Compact mini flood with integral control unit • Ex 'e' terminal chamber • Captive cover bolts and hinged cover

CERTIFICATION & APPROVALS

ATEX Certificate SIRA04ATEX1062

Ex II 2 GD Ex de IIB T3

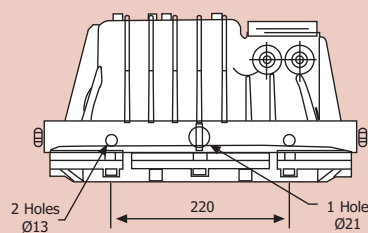
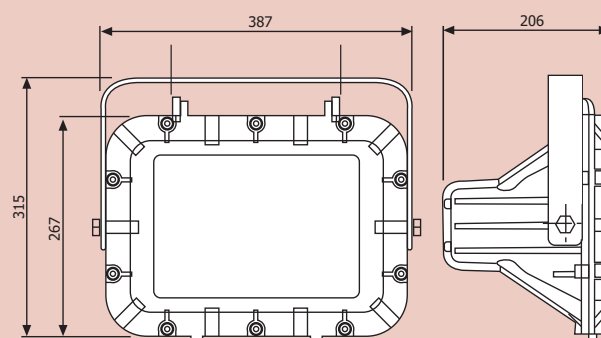
Ambient temperature range:
-50°C to +55°C*

Ingress protection to IP66 and IP67

GOST-R Approved

* Refer to matrix for lamp,
'T' rating.

DIMENSIONS



Dimensions in millimetres

ZONE 1 TYPE Ex 'd' FLAMEPROOF

ORDERING REFERENCE

Std. Cat Ref.	Wattage	Lamp Type	Lampholder	T Class	T °C(Dust)	Ambient °C
V65D/050/HS	50W	HPS	E27	T3	200	-50°C to +55°C
V65D/050/MV	50W	Mercury Vapour	E27	T3	200	-50°C to +55°C
V65D/070/MS	70W	HPS/Metal Halide	E27	T3	200	-50°C to +55°C
V65D/080/MV	80W	Mercury Vapour	E27	T3	200	-50°C to +55°C
V65D/125/MV	125W	Mercury Vapour	E27	T3	200	-50°C to +55°C
V65D/250/TH	250W	Tungsten Halogen	E27	T3	200	-50°C to +30°C

TECHNICAL SPECIFICATION

LAMP TYPES

SON/T 50W & 70W
MBI or MBI-T 70W
MBFU 50W, 80W, 125W
Tungsten Halogen 250W max

POWER SUPPLY

220V, 230V, 240V and 254V 50Hz multi-tapped as standard.
Factory wired to 240V 50Hz.

Tungsten Halogen, 250V max.

60Hz versions also available.

POWER FACTOR

Better than 0.85

TERMINALS

3 core up to 6 mm² conductors with looping.
Terminals for live, neutral & earth are provided. Internally earthed, external earth terminal as standard.

CABLE ENTRIES

Two entry terminal box with M20 x 1.5 tapping as standard.
M25 available on request. Other tappings available on request.

Supplied with 1 x transit plug and 1 x Ex blanking plug.

Cable entry devices (ie. glands) must maintain the IP rating for the luminaire.

MATERIALS

Main Body LM6 aluminium with epoxy paint finish as standard.
Lampglass Toughened soda lime glass plate.
External fasteners Stainless steel.

WEIGHT

Discharge lamp versions - 13Kg
Tungsten halogen lamp versions - 10Kg

MOUNTINGS

Stirrup bracket pre-drilled with central hole of 21 mm diameter and two 13mm diameter holes on 220mm centres for fixing.
The luminaire can be mounted in any orientation.

BEAM PATTERNS

Narrow, medium or wide beam patterns available. MBFU lamps must be used in the forward lamp position for wide beam patterns.

OPTIONS - SUFFIX TO CATALOGUE REF.

/60	60Hz
/M25	M25 Entries
/N	Narrow beam reflector (Not available with Mercury Vapour lamps)
/M	Medium beam reflector (Not available with Mercury Vapour lamps)

ACCESSORIES

There are no accessories for this product.



Email: info@victor-lighting.com
www.victor-lighting.com

PO Box 5571, Glasgow
G52 9AH, Scotland
Tel: +44 (0)141 810 9644
Fax: +44 (0)141 810 9642

Revision 1
August 2008