

# MJB Range

8.3kV

The MJB range provides a simple, low cost but effective solution for the connection of high voltage cables. Manufactured from 316L stainless steel and used primarily for jointing cables or as a connection box, the MJB is suitable for up to 4 phase connections (top & bottom) and a maximum of 8.3kV.



- 180° in and out cable connection
- DTS-01 deluge tested enclosure
- Suitable for low temperature applications

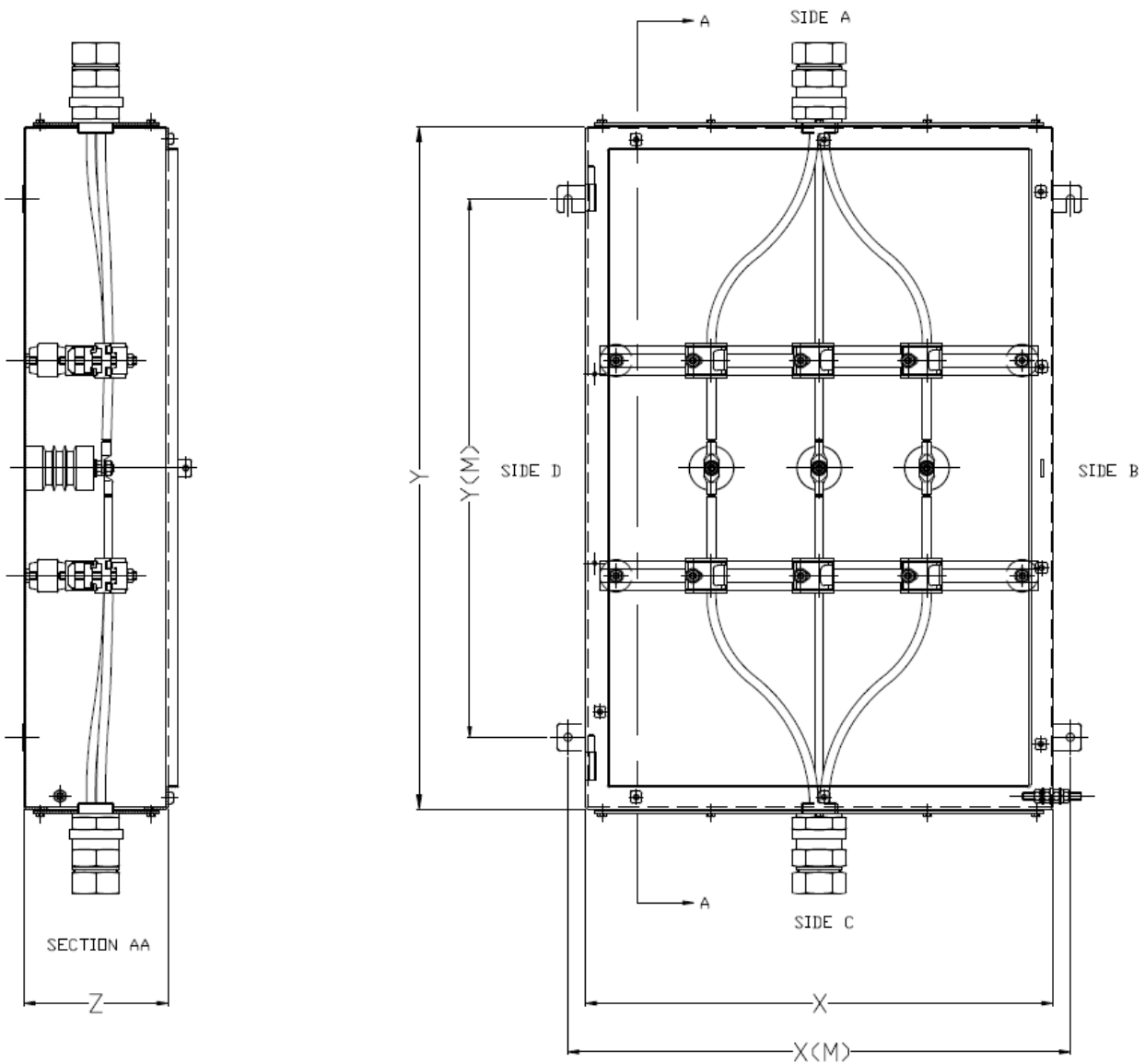
## Enclosure Ratings

Product Reference	Width X (mm)	Height Y (mm)	Depth Z (mm)	Power Rating (W)	Maximum Voltage (kV)	Maximum Current (A)	Maximum Conductor Size (mm <sup>2</sup> )	Maximum Ways	Weight (kg)
MJB65	510	510	200	16	6.6	Dependant upon connector size	95	4	25
MJB85	510	510	300	16	8.3		35	4	30
MJB66	510	780	200	23	6.6		120	4	32
MJB86	510	780	300	23	8.3		35	4	37
MJB67	650	950	200	33	6.6		240	4	44
MJB87	650	950	300	33	8.3		240	4	50
MJB68	800	1250	200	50	6.6		240	4	57
MJB88	800	1250	300	50	8.3		240	4	77

## Standard Specifications

Enclosure Type	High Voltage
Ingress Protection	IP66 to EN60529, Type 4X, DTS-01
Material	316L Stainless Steel (EN 1.4404) enclosure, silicone gasket and A4 stainless steel fixings
Ambient Temp Rating	-50°C to +40°C or -50°C to +65°C (refer to certificate – Table 2, max power dissipation)
Maximum Terminations	Refer to enclosure rating table above
No. of Gland Plates	2
Connector Size	6mm <sup>2</sup> to 150mm <sup>2</sup> for 4 way / 35mm <sup>2</sup> to 240mm <sup>2</sup> for 3 way
Earthing	Via studs on enclosure, door and gland plates
Mounting	Via 3mm thick external mounting straps, slotted upper strap for ease of installation
<b>Certification</b>	
Area Classification	Zone 1 & 21, Gas and Dust / Class 1 Division 2
Type of Protection	Ex e, Ex tD
Apparatus Coding	Ⓔ II 2 G D, Ex e II T6, Ex tD A21 IP66 T85°C
Certificate Number	Sira 99ATEX3176

## General Arrangement



## Options

/4	4 Way Enclosure
/E	3 Way Enclosure with 4 x M10 Earth Points (6.6kV only)

Add the required suffix to the product reference. Restrictions may apply.  
 Example: MJB67/4 = MJB suitable for 6.6kV, based on SX7 box, with 4 ways

## Accessories

EABDM2010SS	M20 Breather drain
-------------	--------------------