

Victor

Lighting

TRIDENT

VL125 - VL126



CATEGORY 2 – ZONE 1 AND ZONE 21



Unique Lighting Solutions for Hazardous Areas

The Trident range of Ex e luminaires brings an innovative design solution for the lighting of hazardous areas. With its distinctive profile, the Trident is lightweight yet robust and can be mounted in any orientation. It is able to withstand the extremes of climate conditions faced by operators around the world. Designed for use in the most hostile environments the luminaire provides an unparalleled ingress protection and resistance to UV radiation via the stainless steel reflector.

The unique 'Third emergency lamp' approach provides additional flexibility in lighting design and management. A non-emergency Trident VL125 can become an emergency VL126 luminaire simply by retro-fitting the 'lamp in lid' 11W compact fluorescent assembly.

Safety is also a key design criteria, with the emergency lamp providing improved lamp integrity as it is only used in the event of mains power failure. The Trident's electronic ballast also features the latest 'End of Life' (EOL) protection, detecting when a lamp is reaching the end of its life and safely shutting the lamp down. This ensures protection against potentially catastrophic failures, reducing un-planned downtime and maintenance costs.

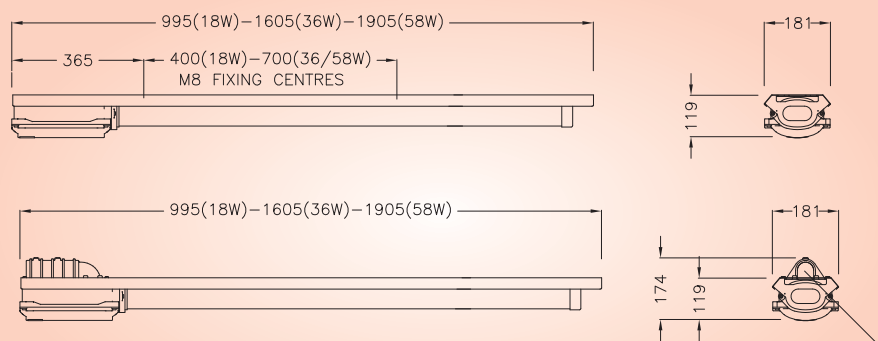
Key Features & Benefits

- Exceptional ingress protection IP66, IP67 & IP68*
- Unique Cassette system allows quick, easy re-lamping – no need for mains isolation
- Suitable for extreme temperature applications: -45°C to +55°C
- Unparalleled UV protection
- End of Life (EOL) Protection – ballast certified to EN 60079-7:2007
- Dedicated pole mount version
- Over-voltage and harmonic distortion protection
- Efficient operation keeps running costs to a minimum

* IP68 on application.

International Approvals

- ATEX Compliant
- IEC Ex Compliant
- GOST Approved
- Saudi Aramco Approved
- DNV Vibration Tested



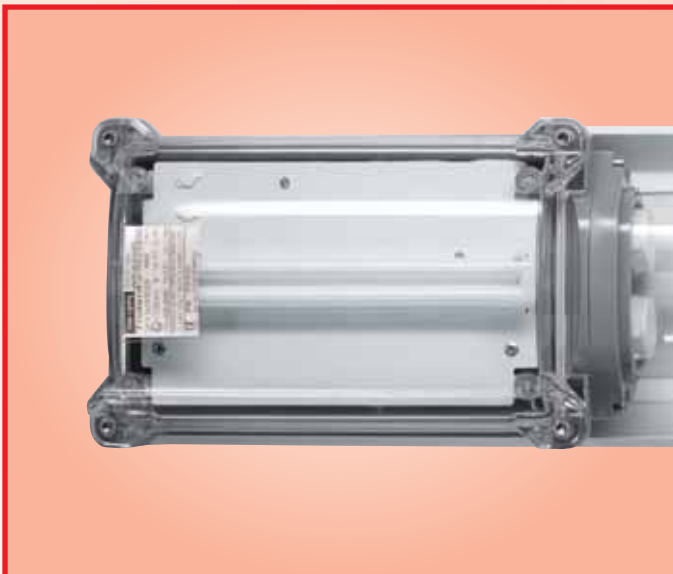
Dimensions in millimetres

FLUORESCENT LUMINAIRE

Emergency Operation – VL126

The Trident VL126 fluorescent provides a new approach to emergency lighting. It features a dedicated third emergency lamp (11W compact fluorescent) housed in its own enclosure.

- Guaranteed lamp integrity as only used in emergency operation
- Lamp in Lid assembly can be easily retro fitted into a standard VL125 offering unique flexibility (STRIE-00001)
- Integral battery backup providing 3 hours operation as standard
- Optional UPS version
- Complies with IECL guidelines for emergency escape route, general and high risk task area emergency lighting requirements



Mounting Options

To provide the maximum level of flexibility, the Trident is available with a range of different mounting options:

Pole Mount
Version



Suffix /SE (Spigot Entry)

Wall Mounting
Outreach Bracket (42mm dia)



NPRO4-0007 (for use with /SE version)
NPRO4-0008 (for std. 18W version)
NPRO4-0012 (for std. 36W version)

Pole Mount
Bracket



SEXCE-00002 (35-40mm dia)
SEXCE-00003 (40-50mm dia)

M8
Eye Bolt



SEXCE-00008

Wall Mount
Bracket



SEXCE-00009

Ceiling Mount
Bracket



SEXCE-00001

Specifications

Trident VL125

Coding	Ex II 2GD Ex em IIC T4 -45°C to +55°C II 2GD Ex em IIC T4 -45°C to +50°C
Ingress Protection	IP66, IP67 & IP68*
ATEX Cert	SIRA03ATEX3206
IEC EX Cert	IECEX SIR 03.0004
Lamp Types	18W, 36W & 58W T8 Bi-Pin Fluorescent, G13 Cap
Power Supply	18W - 110V to 254V 50/60Hz 36W - 110V to 130V 50/60Hz (/120 option) 36W & 58W - 220V to 254V 50/60Hz
Power Consumption	2 x 18W - 37W @ 240V - 0.17A, @120V - 0.31A 2 x 36W - 69W @ 240V - 0.30A, @120V - 0.69V 2 x 58W - 108W @ 240V - 0.46A
Terminals	Up to 4mm ² . Terminals for live, live switched, neutral, earth and looping are provided
Cable Entries	2 x 20mm clearance holes, supplies with 1 x transit plug & 1 x Ex e blanking plug
Temp Classification	Gas Environments - Surface Temp T4 Dust Environments - Surface Temp 100°C
Materials	Enclosure & Lamp Cassette - Polycarbonate Reflector - Epoxy coated stainless steel External Fasteners - Stainless steel Gasket - Silicone
Weight	18W 36W 58W
Loop-in-loop-out	3.8Kg 5.4Kg 6.2Kg
Through-wired	4.4Kg 6.0Kg 6.8Kg
Pole-mount	4.2Kg 5.7Kg 6.5Kg
Suspension	Standard mounting is direct to reflector, see mounting options for other variants
Ordering Reference	TRIE/218/BI TRIE/236/BI TRIE/258/BI

Trident VL126

Coding	Ex II 2GD Ex em IIC T4 -15°C to +55°C II 2GD Ex em IIC T4 -15°C to +50°C
Emergency Duration	3 hours
Emergency Output	423 Lumens
Power Supply	18W, 36W & 58W - 220V to 254V 50/60Hz 18W & 36W Only - 110V to 130V 50/60Hz (/120 option)
Power Consumption	2 x 18W - 37W @ 240V - 0.19A, @120V - 0.35A 2 x 36W - 69W @ 240V - 0.32A, @120V - 0.73V 2 x 58W - 108W @ 240V - 0.48A
Weight	18W 36W 58W
Loop-in-loop-out	5.4g 7.0Kg 7.8Kg
Through-wired	6.0Kg 7.6Kg 8.4Kg
Pole-mount	5.7Kg 7.3Kg 8.1Kg
Ordering Reference	TRIE/218/BI/EM TRIE/236/BI/EM TRIE/258/BI/EM

* IP68 on application.

To calculate photometric values for lighting design please use the free Victor LiteGuide™ software package. Download a copy from our website.

Victor Lighting

PO Box 5571, Glasgow, G52 9AH

Tel: +44 (0)141 810 9644, Fax: +44 (0)141 810 9642

Email: info@victor-lighting.com

www.victor-lighting.com

